



PARKING | GARAGE T at the TEXAS CAPITOL MALL



Garage T for State Employees in the CAPITOL COMPLEX



State Garage T at the Texas Capitol Complex – This new garage has an additional 2500 parking spaces exclusively for State Employees in the Capitol Complex. State Employees from any agency may park in this garage.

The garage is open to State Employees working in the Capitol Complex with an id badge..

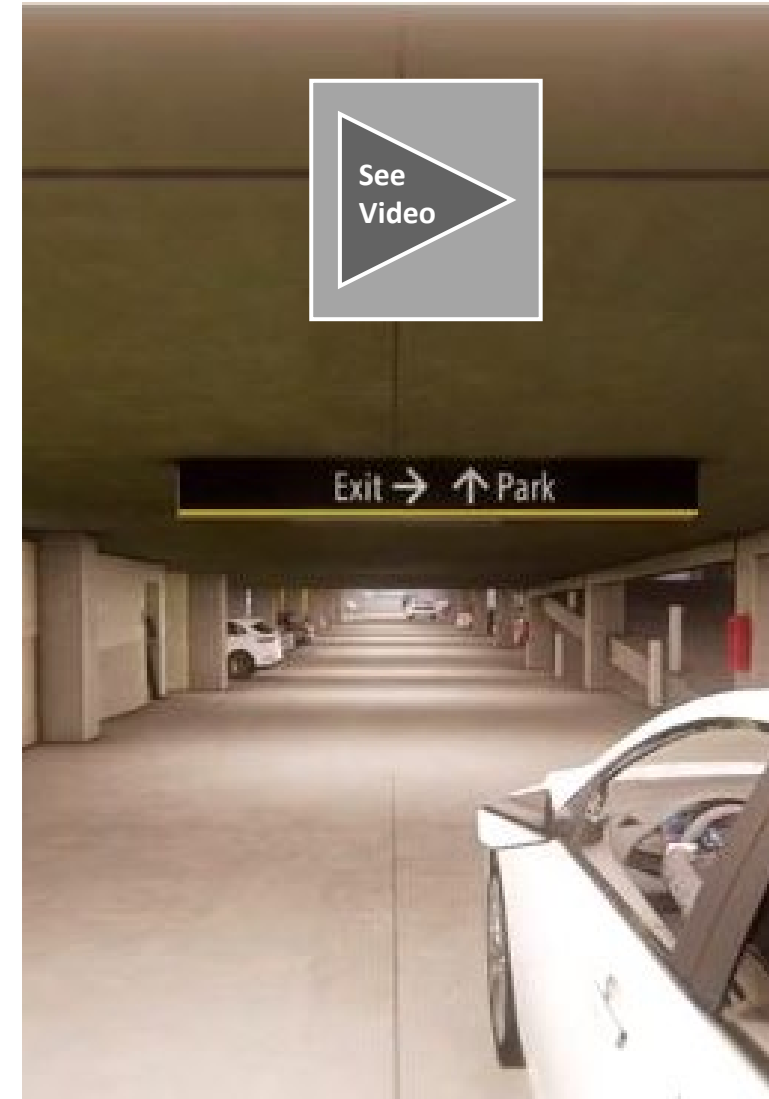
Tenants of the George H.W. Bush Building (1801 Congress) will have use of Garage W, an above ground parking garage attached to that building.

Capitol Complex Child Care Center Access: To ensure the safety of our State Employees and their children, a dedicated and secured area for drop-off and pick-up traffic from the Child Care Center has been designed under the Barbara Jordan building. Enter Garage T on 17th Street and travel south toward the up ramp to B1. This upward ramp is for the exclusive use of the students' families and the staff of the Child Care Center.

Access to Garage T: The entrances and exits ramps to Garage T are on 17th Street. The entrance ramp is level B2. At the center of the garage, traffic to the Barbara Jordan Building should turn south, and all other traffic should turn north.

Open parking is available on all levels of the garage with a valid DPS parking permit (sticker). State Employees may park in any open parking slot not marked "Reserved".

Find a parking space and walk to the closes Portal to access the Texas Capitol Mall. (See portal map)



Video: <https://vimeo.com/463240488/a3578f2511>
Texas Facilities Commission -2020



Portal A

Portal B

Garage T

Capitol Mall

State Garage T - Capitol Complex (Sections A, B, and C)



PORTALS

Section A:

- **Portal A** - Piney Woods (Stairs & Elevators)
- **Portal B** - Prairies and Lakes (Elevators)
- **Portal C** - Panhandle-Plains (Stairs)

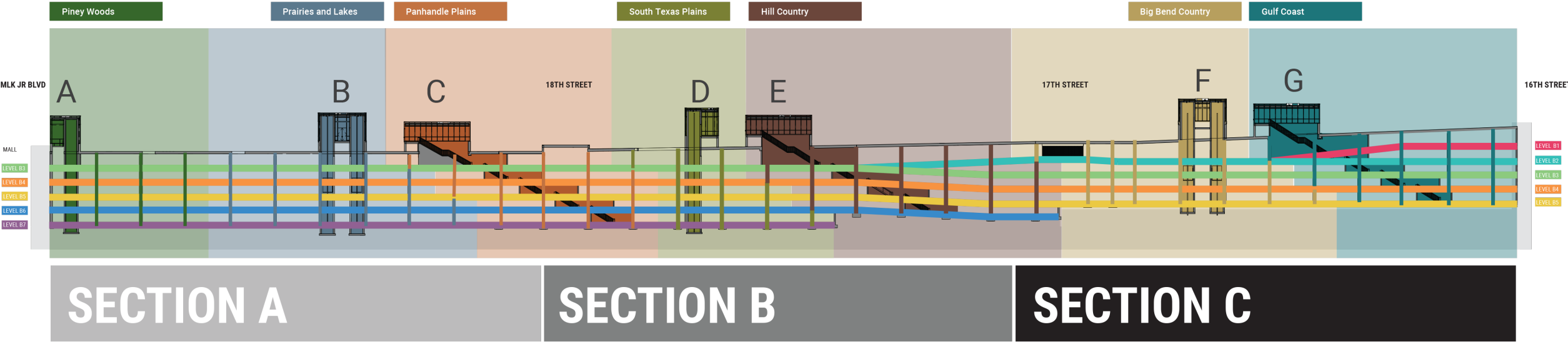
Section B:

- **Portal D** - South Texas Plains (Elevators)
- **Portal E** - Hill Country (Stairs)

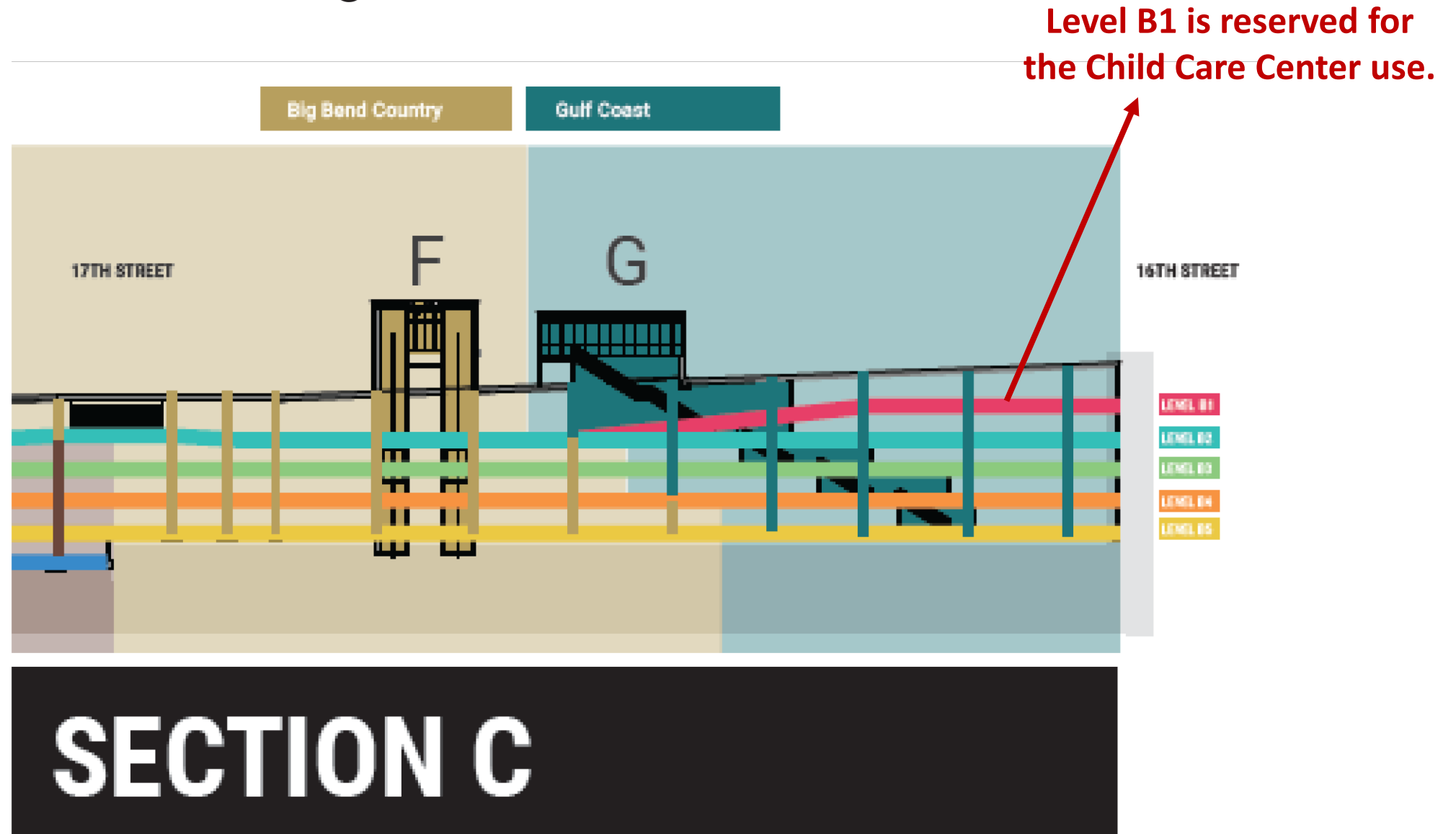
Section C:

- **Portal F** - Big Bend Country (Elevators)
- **Portal G** - Gulf Coast (Stairs)

State Garage T - Levels & Sections



State Garage T Section C



Texas Capitol Mall Garage T

(underground parking)
January 23, 2023

1

Enter from the West on 17th Street

East

West



2

Turn NORTH to Sections A & B
Turn SOUTH to Section C

3

Park and walk to the closest Portal
to access Texas Capitol Mall

Barbara Jordan Office Building
(1601 Congress Avenue)



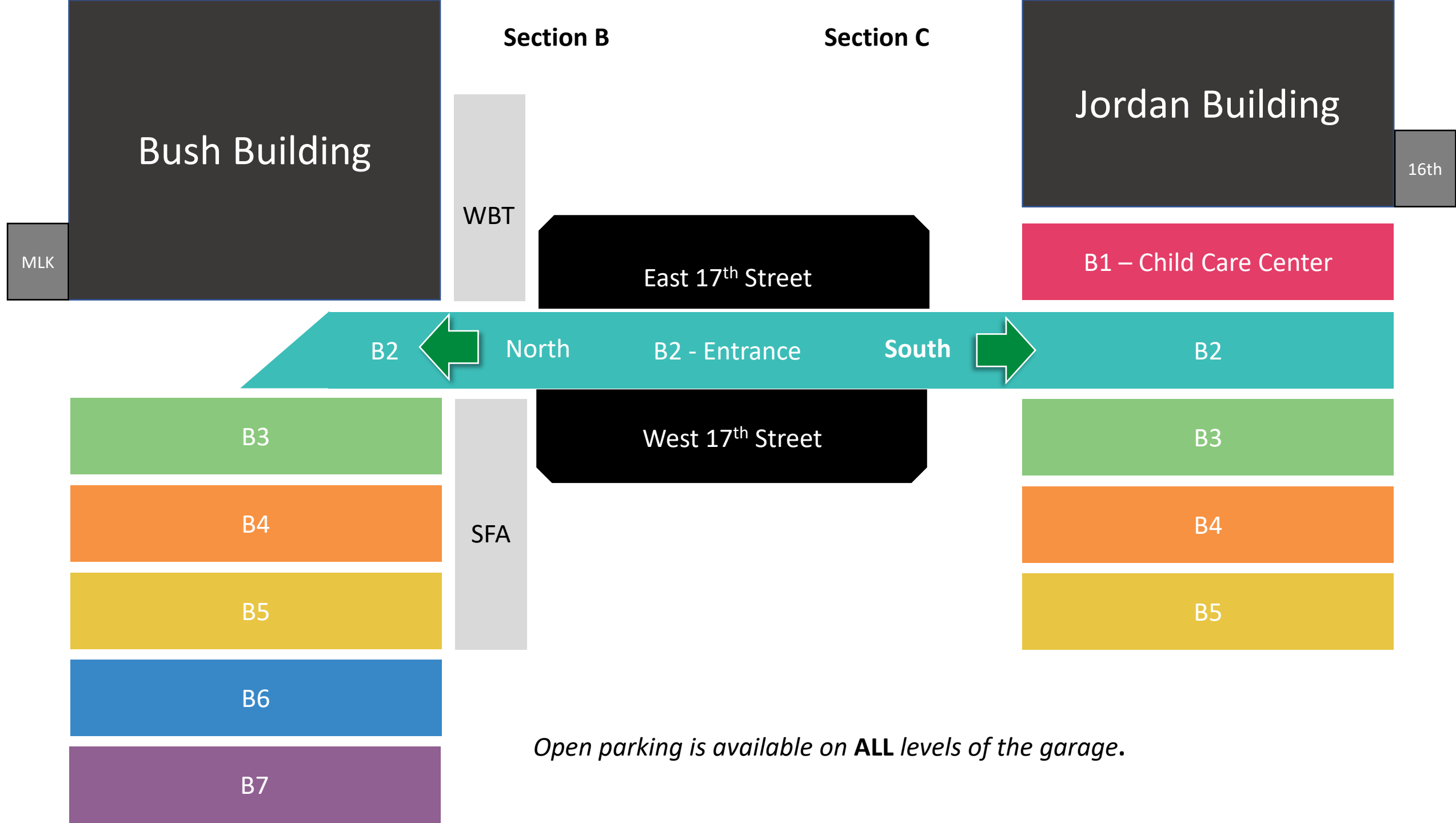
Portal F (Elevators)

B2 – Garage Entrance

B1 -Child Care Center

Garage T





Texas Capitol Mall
State Garage T - Capitol Complex
17th Street Entrance - Level B2



Garage T

- Only for the State Employees use. Must have a State ID badge to enter.
- State employees may park in any “open” parking space NOT marked reserved. Your vehicle must have a parking permit (sticker).
- Entrance/Exit on East or West 17th St.
- Open weekdays M-F 5 a.m. to 8 p.m. (The coiled grills will be down after hours and on weekends and holidays.)
- Use the closest **Portal** (elevators or stairs) to access the Mall surface.

Important Phone Numbers

Access issues: call **512-534-9611** or use the intercom at the gates, M-F 8a-8p

TFC Operations: **512-463-3600** (24/7)

DPS Emergency: **512-424-7391** (24/7)

Emergencies: Find the blue emergency call box near the portals, press the red button for assistance. The Operator will know your exact location. Or call 911.

Overview of Capitol Complex Phase I Parking

TEXAS CAPITOL MALL

GARAGE T

Under the new Texas Capitol Mall lies a five-story underground parking facility for the exclusive use of State Employees.

The garage has three sections A-C, and seven portals that connect to the Mall above. The portals have stairs or elevators.

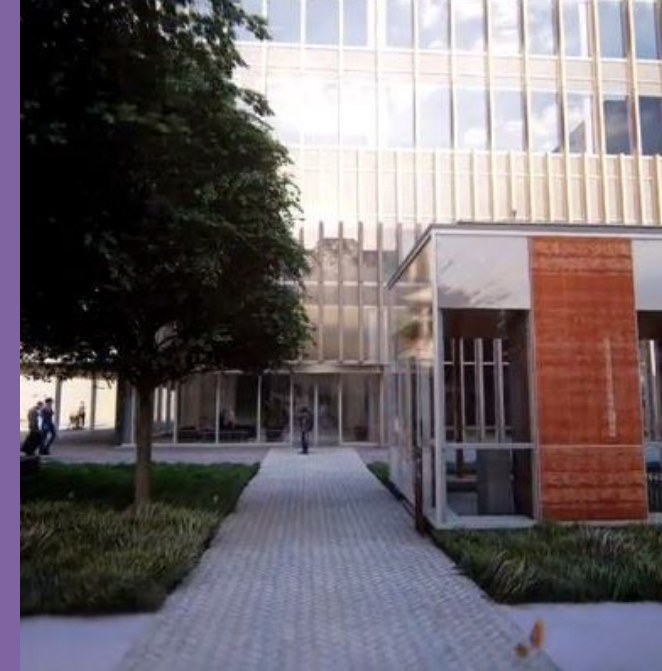


EMPLOYEE PARKING

You must have an active State ID Badge to enter Garage T.

Reserved and Open State Employee Parking is available through out the garage.

Open parking spaces will be available on a first-come, first-served basis. Reserved parking is handled through your Agency's parking coordinator.



Hours

Garage T is open to State Employees on weekdays (M-F) from 5 a.m. to 8 p.m.

To secure and close the garage, the coiled grills will be down after hours and on weekends and holidays.



VISTOR PARKING

There is no visitor parking in Garage T (underground), or in Garage W at the George HW Bush Building. Visitor parking is available at meters in the area, in Lot 19, the Bullock Museum garage, the Capitol Visitor Garage, and the UT Brazos garage.

