



STATE OF TEXAS CAPITOL COMPLEX PROJECT PHASE II



Texas Capitol Complex Update

Progress updates on the Capitol Complex Project | **February 2024**

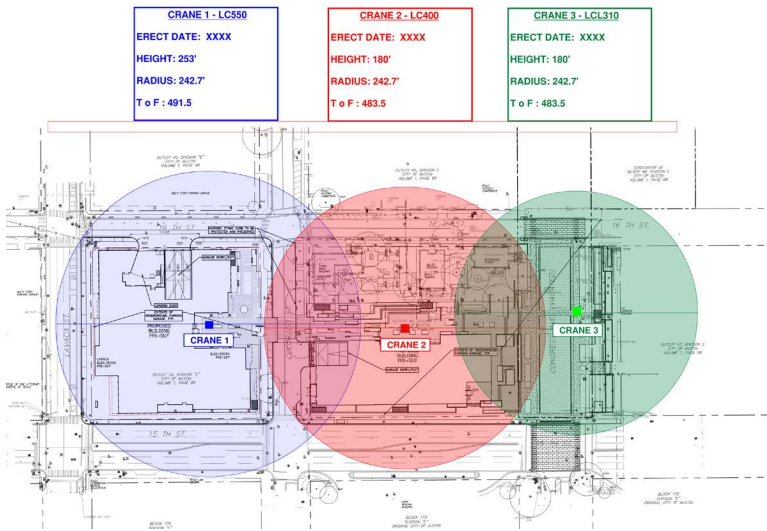


Flying High – The First Crane Arrives on Phase II

It has been less than three years since the last crane for Phase I came down, and the George H.W. Bush and Barbara Jordan State Office Buildings were put into operation. A crane is once again flying over the Capitol Complex as the Phase II project team begins setting the foundational piers that will support the new state office buildings at 1500 Congress and 1501 Lavaca. A 285-foot crane was installed on the 1501 Lavaca site in January. The crane for 1500 Congress is scheduled for installation in March, with the crane for the Texas Capitol Mall arriving in mid-June.

Planning for a Big Arrival Takes Time

The project team's first steps in planning the installation of three behemoth tower cranes on the adjacent sites of the Phase II project required understanding the relation of the cranes to each other, the planned building construction, overhead utilities, and the buildings and streets surrounding the sites. JE Dunn Superintendent Mike Hamline is in charge of site operations on Phase II and explains that selecting tower crane positions is about production and safety.



Phase II Crane Plan depicting overlapping swing areas.

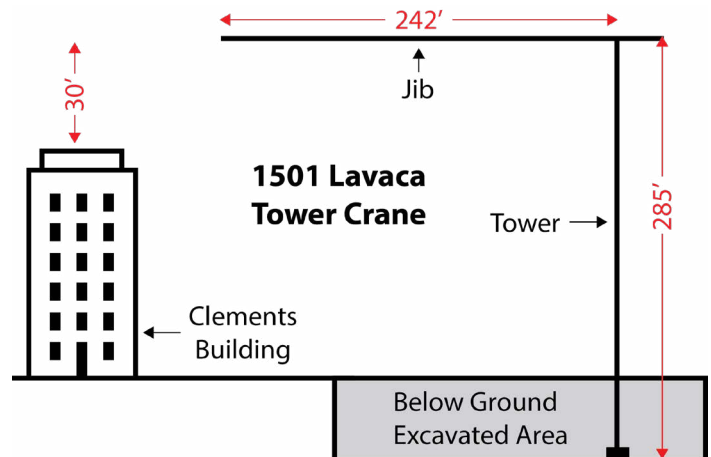
“We draw circles on the logistic map that represent swing paths based on the radius reach of each crane. We position the cranes to stay on site as long as possible to deliver loads of equipment and materials to areas that maximize work efficiency until we reach the point in construction when the cranes become obsolete and are in the way,” said Mike. “Since we will have multiple cranes working in the same area, the swing paths overlap, so we vary the heights of the cranes and plan how they will interact to ensure the safety of everyone and everything within and immediately adjacent to the crane swing areas.”

Cranes are built in sections, which allows the project team to vary the heights while ensuring that the cranes remain higher than the top of the planned construction and surrounding buildings.

“The Clements Building is adjacent to the 1501 Lavaca site, so we built the crane with a 30-foot clearance of the jib above the top of the building. The crane won't swing over the building, but seeing a crane moving outside your office window can be distracting. We gave the crane a high clearance so people wouldn't see it move.” Mike said.

The tower crane for the 1501 Lavaca construction is located almost in the center of the site while remaining outside of the building and garage ramp footprint. This will give the crane the most capacity for picking up loads from trucks entering the site at Colorado Street.

Due to the height of the cranes and the load weights they carry, installing tower cranes in downtown Austin requires an extensive permitting process. The permits must be approved by the State, the City of Austin, the Federal Aviation Commission, Austin-Bergstrom International Airport, and hospitals that operate helipads in Austin. The total planning and permitting process for the 1501 Lavaca crane took seven months.





The JE Dunn Assemble and Dismantle team prepare to unload a section of the 1501 Lavaca tower crane from a truck.

Assembly Time

A unique feature of JE Dunn Construction's services is that they own their own cranes, which are managed from a centrally located crane yard in Kansas City, Missouri. While the project team was working through the permitting process, the crane was prepared for transport, and the project team coordinated the assembly plan with the crane installation experts from JE Dunn's Assemble and Dismantle (AD) Department.

Part of the assembly plan is preparing the location of the crane. The tower crane for the 1501 Lavaca site can carry loads up to 39,670 pounds which requires a strong foundation. Beard Drilling Services drilled and installed four concrete piers. Before the project team poured the foundation, the crane base was placed on top of the piers and surrounded with CTR rebar. The concrete was poured to embed the crane base in the foundation. The final step was curing the concrete to 3500 psi.

The thirty-piece crane assembly was transported on sixteen trucks along a preplanned route to a staging area in Elgin, Texas. All the parts of the assembly were inspected before delivery to the project site. A six-person team of installation experts led by AD Director Tim Reff traveled with the crane.

Assembling a tower crane is highly specialized, controlled work. Superintendent Mike Hamline established a 75-foot safety zone for the crane installation. During the two-and-a-half-day installation, only necessary personnel were allowed inside the safety zone.

Austin Crane provided an assembly crane taller than the tower crane to assist with the installation and JE Dunn's AD team assembled the crane.

Depending on the size or complexity of the site, a project team may need to close down a jobsite during a tower crane assembly. However, due to the open site layout on 1501 Lavaca and JE Dunn's thorough assembly plan, the project team was able to keep drilling piers holes on the west side of the site during the crane assembly process.

After the crane was assembled, there was still a lot of work to do to put the crane into operation. Tower cranes have many electrical components, and each part of the crane must be inspected for performance. Once the 1501 Lavaca crane passed all its tests, the project team put it to work, moving the equipment and material that will soon be placed as the building frame begins to rise from the ground.

Up and Running

Now that the 1501 Lavaca tower crane is in operation, the project team is working on the plans for the 1500 Congress and Texas Mall tower cranes. The first installation ran exactly as planned, so the team will use the same protocols for the next tower crane installation for 1500 Congress.

We thank JE Dunn, Beard, Austin Crane, and all the individuals who made the crane installation a success, and we celebrate this major milestone in the project.

A View from the Top:

A birdseye view of the State Capitol from the top of the 1501 Lavaca crane.



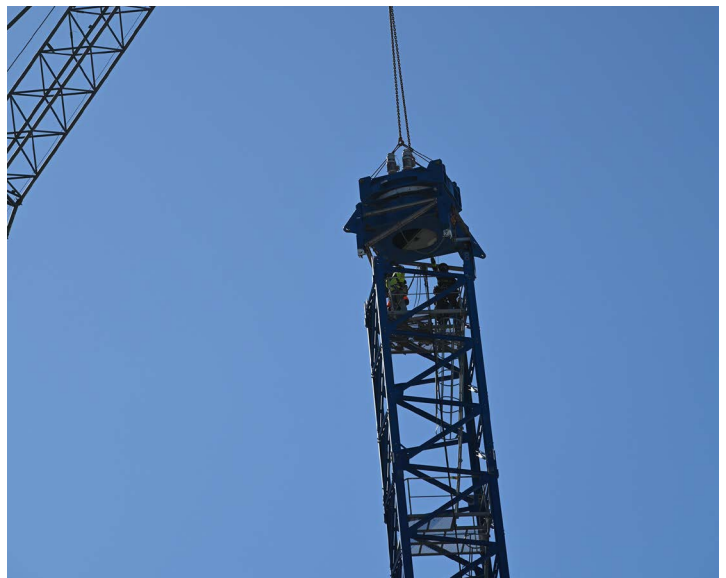
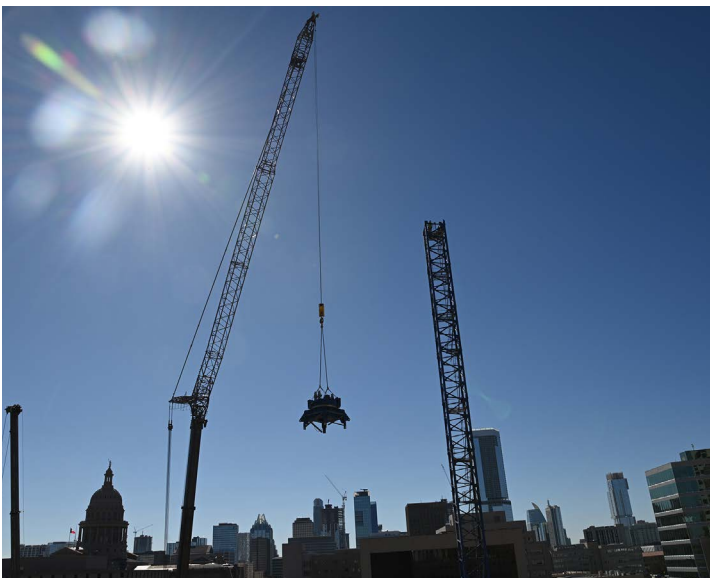
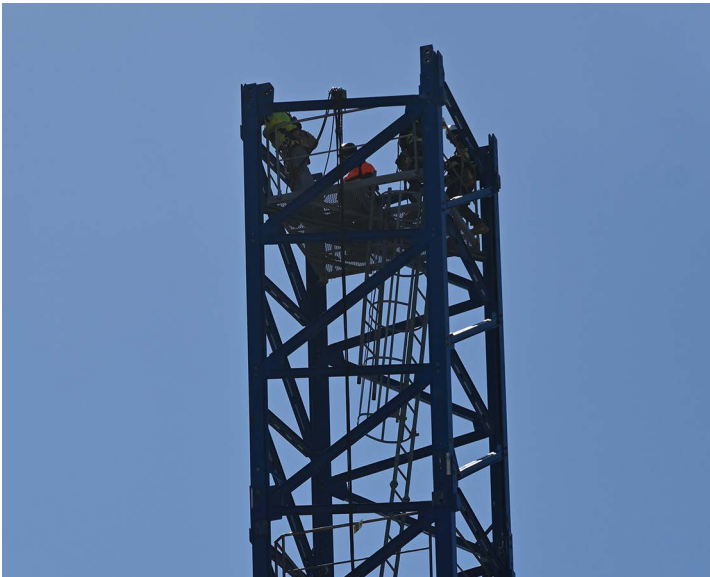
A member of the JE Dunn's AD team (in the red circle) connects a section of the jib held by the assembly crane.



JE Dunn Crane Operator Gerrard Hennessy pilots the 1501 Lavaca tower crane high above the Capitol Complex.



Photo Gallery of the 1501 Lavaca Crane Installation





Team Spotlight - Smith and Associates, LLC

Project Role - HUB Procurement and Contract Administration

The Team Spotlight highlights the contributions of the team members working to complete Phase II of the Capitol Complex Project.

Pictured above from left to right: Kevin Parks (Square One), Regina Adams (Smith and Associates, LLC), Katherine Sasser (Square One), Jessica James (Square One), David Harding (Hill International), and Steven Bell (Square One)

The Texas Facilities Commission (TFC) is committed to the mission of the State of Texas Historically Underutilized Business (HUB) Program to provide opportunities for participation on State of Texas projects. The program supports the growth of HUBs, fuels the local economy, and enriches TFC's projects with the specific expertise required to complete high-quality facility projects for the State of Texas.

Each construction contract managed by TFC has minimum State-mandated HUB participation goals. The HUB participation goal for all State building construction contracts, including the Capitol Complex Phase II Project, is 21.1%. Regina Adams, CEO and Founder of [Smith and Associates, LLC](#), a State expert in HUB management, is providing HUB coordination services as a member of the [Square One](#) project controls team. Regina's role is to assist the TFC HUB Department in securing contracts with qualified HUBs and track the program goals for the project.

Capitol Complex Phases I and II

Smith and Associates, LLC has served on many construction contracts, providing HUB procurement and contract administration consulting services for prime contractors and program managers. The firm coordinates with primes, architectural and engineering firms, HUBs, and State, County, and Municipal agencies to help achieve State of Texas HUB program goals.



Capitol Complex Project Phase I

In 2018, Smith and Associates, LLC was awarded the HUB procurement and contract administration consulting services as a member of the [Balfour Beatty](#) Construction Administration Services contract for the Phase I of the Capitol Complex Project. Phase I provided 134 HUB-certified contractors and vendors more than \$84 million in contracts. During the project, TFC recognized Smith and Associates, LLC for their *Outstanding Contribution at the TFC's 3rd Annual HUB Expo*.

In 2023, Smith and Associates, LLC was invited to participate in Phase II of the Capitol Complex Project as part of the Square One project controls contract. The project is currently in its second year and has already awarded 30 HUB contractors and vendors more than \$29 million in contracts. Next month, a major building construction trade package will be released, which will significantly increase the opportunities for HUB contractors and vendors on this project.



Capitol Complex Project Phase II Rendering

In her consultant role, Regina works closely with the Texas Facilities HUB Department, program manager Square One, prime contractor JE Dunn, and project architect/engineer HOK to help maximize opportunities for HUBs and ensure all vendors are paid according to the Prompt Payment Act.

“I see my role as the teams’ second set of eyes making sure that everyone stays in sync, that State funds are used properly, and everyone is paid the amount they are owed on time,” Regina explains. “I believe working as a team member is the only way to work. Being a member of this Capitol Complex Project team and part of this historic project is so meaningful to my company and to me as an individual. I will treasure my time working with the team and this project forever.”

Yolanda Stray, HUB Director for the Texas Facilities Commission, appreciates Smith and Associates’ contributions to the Capitol Complex project.

“Regina is a true advocate for the small business community. Her guidance empowers small businesses to confidently navigate the state procurement process and maximize their contribution to the state’s economic engine. Her collaborative approach ensures compliance and empowers us to achieve our goals.”



The Texas Facilities Commission hosts regular HUB Outreach events to provide networking opportunities and educate HUB contractors and vendors on project opportunities. Pictured above, first row, left to right: Yolanda Strey (TFC) and Shonte Gordon (TFC). Back row, left to right: Indria Hollingsworth (JE Dunn), Shannon Brunner (Flintco), Miriam Renfer (White Construction), Regina Adams (Smith and Associates, LLC), and Christine Johnson (White Construction).

Forging Her Own Path

Regina grew up in the Mississippi Delta understanding the importance of giving back and plotting your own course in life. She graduated from the renowned [Alcorn State University School of Business](#) in Lorman, Mississippi. Alcorn State University is an HBCU (Historically Black Colleges and Universities) and the oldest public historically Black land-grant institution in the United States. Regina was among the first generation of her family to graduate from college.

After college, Regina accepted the position of administrator in The University of Texas (UT) at Austin's Department of Housing and Dining at Jester Center West. After just three months, she was promoted to Senior Administrator over Jester Center East. In these roles, Regina served as an advocate for students and parents and was honored to coordinate the housing and dining services for the Texas Special Olympics team.

Over the next twenty years, Regina's career and reputation in State government grew. She served in several leadership roles in procurement and contract management for multiple State agencies, ultimately becoming Deputy Director of Purchased Clients Services Contracts and Procurement for the Texas Health and Human Services Commission, one of the State's largest agencies. During her tenure, she created a contract compliance application for open enrollment contracts still in use today, served as a member of the committee that helped with the transition of the General Services Commission to the Texas Facilities Commission in 2007, and assisted in the initial installation of the Centralized Accounting and Payroll/Personnel System (CAPPS) for the State. Regina managed billions of dollars in contracts during her service to the State and retired in 2013.

Regina focused on volunteer work for the next few years, advising several non-profit organizations, including the Black Men's Health Clinic in Austin, a first-of-its-kind health clinic addressing the long-time care gap for men of color.

The Entrepreneur Emerges

In 2016, Regina opened the doors of Adams Smith and Associates, dba Smith and Associates, LLC. She named her business in honor of her grandfather and mother's dedication to the entrepreneurial spirit. The purple and gold in her company logo pay homage to her beloved Alcorn State University.

Smith and Associates, LLC is a certified State of Texas MBE/WBE and national SBE based in Pflugerville, Texas. The firm is experienced in managing all types of high-profile governmental and private corporation procurement activities and contract management of key performance requirements.

As CEO of the company, in 2018, Regina was invited by the U.S. Small Business Administration (U.S. SBA) to participate in the [Emerging Leaders](#) program, an executive-level, master training series designed to accelerate the growth of high-potential small businesses across the United States. In 2018, Smith and Associates, LLC graduated from the program and was recognized by the U.S. SBA as an emerging leader.

"When I first opened my firm, my main focus was working with women-owned businesses. The U.S. SBA Emerging Leaders Program taught me to think bigger. I now think of Smith and Associates, LLC as a valuable tool for all small businesses" said Regina.

Continuing to Give Back to the Community

Throughout her career, Regina has always remembered the lessons of her mother and grandfather. Regina and many of Charlie Smith's grandchildren and great-grandchildren have become entrepreneurs, fulfilling their grandfather's dream for them. The family also continues to live the example of Gloria Smith-Jackson in giving back to their communities. In 2020, Regina joined the board of the [Rainbow Housing Assistance Corporation](#), a private non-profit organization that provides service-enriched housing for more than 28,000 families throughout the nation. The organization's services include free after school youth education programs, job readiness and placement, healthcare resources, computer literacy and life skills training, financial resource management, and community-building exercises. In 2023, Regina



Regina's mother, Gloria Smith-Jackson

From her earliest memories, Regina remembers her mother bringing home people who needed a hot meal or a place to stay. Her mother, Gloria Smith-Jackson, had one of the first minority women-owned businesses in Mississippi and was known throughout the community for taking care of those in need. Both Gloria and Regina's grandfather, Charlie Smith, encouraged Regina and the other children in the family and community to attend college and become entrepreneurs. An eight-year-old Regina promised her grandfather she would name her business after him.

The legacy of Gloria Smith-Jackson's contribution to her community and minority, women-owned businesses in Mississippi is still making history. Her photograph hangs in honor in the Smithsonian National Museum of African Art in Washington, DC.

participated as a keynote panelist at the [Texas Affiliation of Affordable Housing Providers \(TAAHP\)](#), Housing Conference in Austin, Texas.

HUBs often reach out to Regina for guidance on marketing their businesses to prime contractors and owner entities. Below are her top tips.



Regina's Tips for HUBs

- Contact the Texas Comptroller HUB program. Make sure that you have entered your item codes correctly and keep them up-to-date as you add new services.
- Update your HUB certification in a timely manner.
- Attend outreach events. Build relationships and get to know the HUB directors for each agency. If there is an agency that you are interested in, try to meet with them. Each agency keeps its own vendor list in addition to using the CMBL. The agencies will add you to their vendor lists, and you will get the opportunities emailed to you.
- Never give up, and don't get discouraged. Your next opportunity is out there.

“As a HUB, I am grateful to serve as the eyes and ears for HUBs and help identify opportunities. I appreciate that the State ensures the participation of HUBs on these historic projects.” – Regina Adams.

TFC Capitol Complex Phase II Work Package 8 – Pre-bid & HUB Outreach Event

March 5, 2024 | 2 p.m. to 4 p.m.

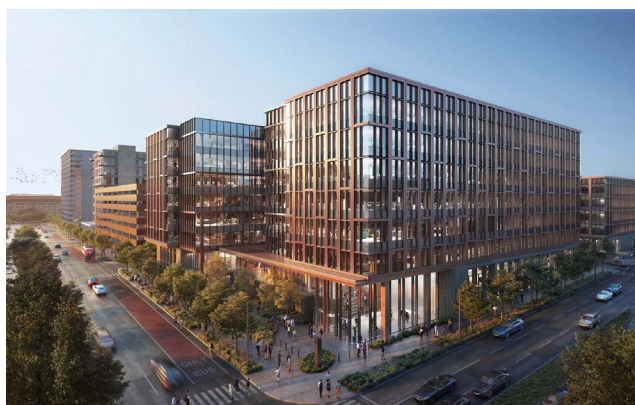
Barbara Jordan State Office Building, Room 2.035

1601 Congress Ave., Austin, Texas 78701

Parking permits for State Garage(s) will be issued with RSVP on Eventbrite.



[CLICK HERE TO REGISTER ON EVENTBRITE](#)



JE Dunn Construction is the Construction Manager at Risk for the Capitol Complex Phase II project for Texas Facilities Commission (TFC). The project includes two new State office buildings and one block of the Capitol Mall.

We will be soliciting bids for; Stone, Decorative/Metal Railings, Millwork & Finish Carpentry, Metal Panels, Roofing, Waterproofing, Doors/ Frames/Hardware, Framing, Drywall, & Finishes, Flooring, Tile, & Stone, Specialties & Signage, Equipment & Furnishings, Fire Suppression, HVAC Controls, and Landscape/Hardscape/Pavement.

All interested trade partners are invited to attend this non-mandatory HUB Outreach Pre-bid meeting. To learn more about how to work with JE Dunn as a trade partner and our Minority Contractor Development program, please join us at this meeting.

JE Dunn is an equal opportunity employer: minority/gender/disability/ veteran/sexual orientation.

TFC Capitol Complex Phase II Work Package 8 – Pre-bid & HUB Outreach Event. For more information and plan access for this project, all interested trade partners may contact austin.estimateding@jedunn.com.

This bid package includes the following scope of work:

- Stone
- Decorative/Metal Railings
- Millwork & Finish Carpentry
- Metal Panels, Roofing, Waterproofing
- Doors/Frames/Hardware
- Framing, Drywall, & Finishes
- Flooring, Tile, & Stone
- Specialties & Signage
- Equipment & Furnishings
- Fire Suppression
- HVAC Controls
- Landscape/Hardscape/Pavement

Construction Traffic Updates

SAFETY ALERT:

Drive defensively and slow down on 15th Street

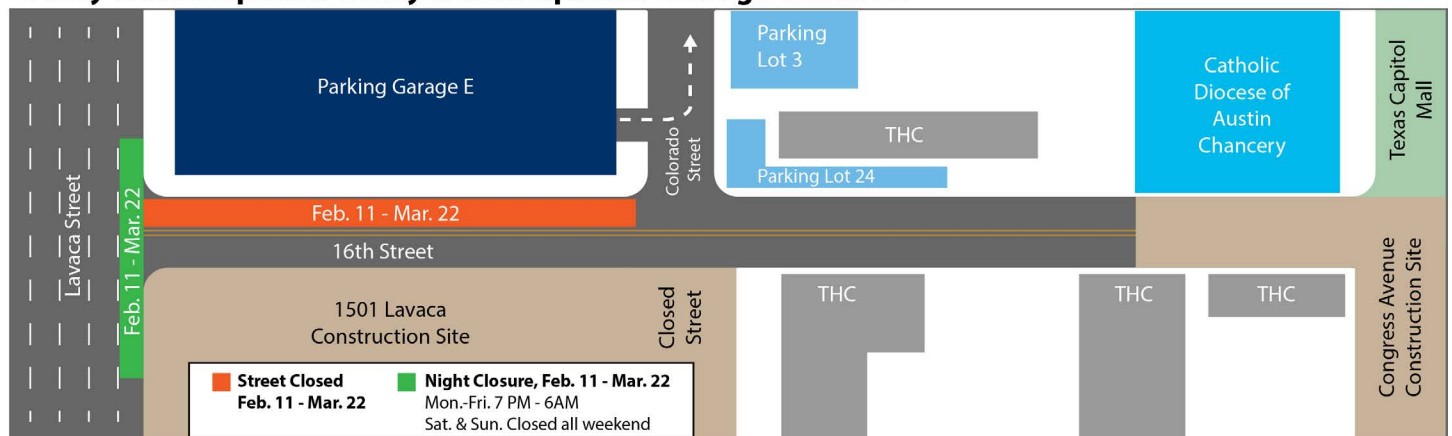
Road Closures

February 28 - 29: Night closure on 16th Street from Congress Avenue to Colorado Street.

On Wednesday, February 28, the westbound lane of 16th Street between Congress Avenue and Colorado Street will be closed to through traffic from 7 p.m. through 6 a.m. for utility relocation work. A flagger will be onsite.

Follow us on Twitter for specific details on street and closures. [@TFCTx](https://twitter.com/TFCTx)

Utility Work Sequence Utility Work Sequence Through March 22



Traffic Pattern Change Through March 22

Utility work to support the new buildings of the Capitol Complex will impact traffic patterns near State Garage E.

Lavaca at 16th Street: The Northbound right-hand lane of Lavaca at the intersection of Lavaca and 16th Street will be closed nightly for utility relocation work through March 22, Monday through Friday, 7 p.m. - 6 a.m., and all day Saturday and Sunday.

16th Street from Colorado Street to Lavaca: The westbound lane of 16th Street from Colorado Street to Lavaca will be closed through March 22. Only the eastbound traffic lane from Lavaca to Colorado Street will be open for travel.

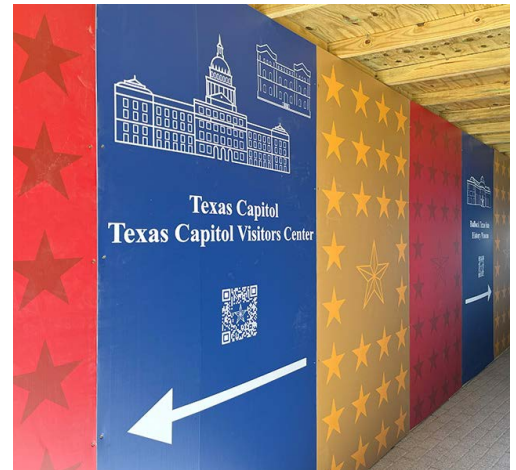
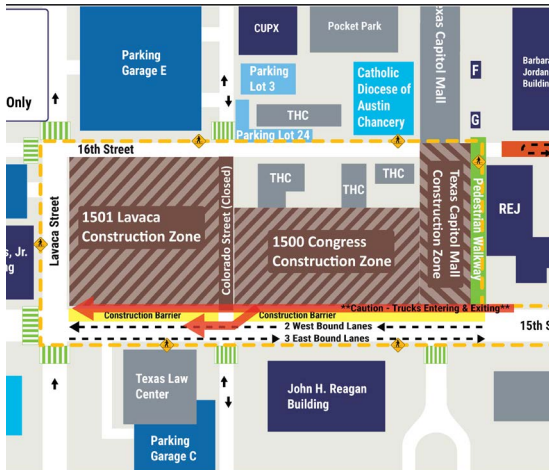
All exiting traffic from Garage E must turn north (left) on Colorado Street. (Colorado Street from 16th Street to 15th Street will remain closed for the duration of the project.)

Please respect the flaggers and use caution if you must travel in this area.

Bird's eye view: Follow our daily progress on the construction cameras of this project. Visit www.capitolcomplex.org to see our work.

For more information on the project, please reach out to us at info@capitolcomplex.org

Pedestrian Routes



Need a map? Use the special sidewalk routes developed for this project. ([Download a map here.](#))

Look for the six foot, red, A-frame signs for a current map of the sidewalk routes around the construction. Use your smart phone to scan the QR code on the signs to open a pdf of the Capitol Complex Travel map you can take along with you.

Traveling from the Bullock Museum to the Capitol? [Watch this video.](#)

Closed Streets and Sidewalks

All sidewalks adjacent to the construction zone are closed.

- **CLOSED:** Colorado Street between 15th & 16th Street is closed to through traffic, and all adjacent sidewalks are also closed. Use the sidewalks on the west side of Lavaca Street to travel north or south or use the covered sidewalk next to the Robert E. Johnson Building (REJ) building to travel north or south.
- **CLOSED:** Congress Avenue between 15th & 16th Street is closed, as well as adjacent sidewalks. Use the covered walkway along the REJ Building instead.
- **CLOSED:** Sidewalks on 15th Street between Lavaca & Congress (North) - Use the sidewalk on the Capitol side of the street instead.
- **CLOSED:** Sidewalks on Lavaca between 15th & 16th Streets (East and South) - Use the sidewalk along the William P. Clements (WPC) building instead.

Closed Crosswalks

- **CLOSED:** Congress & 15th Street
- **CLOSED:** Colorado & 15th Street
- **CLOSED:** Colorado & 16th Street (East, West, and South)
- **CLOSED:** Lavaca & 15th Street (East and North)
- **CLOSED:** Lavaca & 16th Street (East and South)

Where to Cross 15th Street

- **Congress** – Use the Brazos Street crosswalk.
- **Lavaca** – Use the west crosswalk closest to the Double Tree Hotel.

IMPORTANT FOR YOUR SAFETY



Construction zone on 15th Street between Congress Avenue and Lavaca Street. The construction loading zone occupies the northern lane of 15th Street. Watch out for construction vehicles entering and exiting from this lane. [Watch the video.](#)



Watch your step! There is uneven pavement and detours in this area.



PLEASE - Respect the flaggers.



Drive defensively and slow down on 15th Street.

Follow us on X (formerly known as Twitter) for specific details on street and closures. [@TFctx](#)

Neighborhood News

Blanton Museum of Art



CURRENT EXHIBIT: The Floating World: Masterpieces of Edo Japan from the Worcester Art Museum

Enjoy over 130 woodblock prints and painted scrolls from one of history's most vibrant artistic eras. Don't miss this presentation. It is the first time the [Worcester Art Museum](#) is touring its famed collection of Japanese artworks.

After centuries of conflict and war, Japan's Edo period (1603–1868) was a time of peace, stability, and economic growth. Members of the ruling class patronized artists, merchants, entertainers, and courtesans in major cities like Tokyo (then called Edo), Kyoto, and Osaka. Sharing a visual culture and appreciation for the transient pleasures of life, such diverse groups mingled in a metropolitan melting pot known as *ukiyo*, or “floating world.” There, a new art genre emerged: *Ukiyo-e*. These “pictures of the floating world” depict the lifestyle, pleasures, and interests of the urban population—from samurais, geishas, and kabuki actors to boat parties, palaces, and lush landscapes.

Visit in March and enjoy an interactive printmaking station.

This exhibition closes on **June 30, 2024** | [Home - Blanton Museum of Art](#)

Bullock Texas State History Museum



H-E-B FREE FIRST SUNDAY – March 3, 2024, 10:00 a.m. - 5:00 p.m.

Commemorate Women’s History Month and important women in STEM.

Enjoy FREE exhibition admission all day during H-E-B Free First Sundays, held the first Sunday of every month. Activities are from 10 a.m. to 2 p.m. Families can explore the Story of Texas through three floors of exhibitions that showcase and tell the history of artifacts from around the state.

This month, explore women’s contributions to science, technology, engineering, and math through hands-on science experiments with [Girlstart](#). Or learn the amazing world of coding through fun, interactive robots for all ages with [Latinitas](#) (ages 9-14). Or explore the history of women mathematicians with [Math Happens](#) through curve stitching, a craft invented in the 1900’s by mathematician Mary Everest Boole to teach girls and young women about math. Math Happens will provide a variety of frames, thread, and examples for you to make your own curve stitching creation. Join us for this fun and educational day of exploration. [The Bullock Texas State History Museum \(thestoryoftexas.com\)](https://www.thestoryoftexas.com)

Waterloo Greenway



Event: Past Deposits from a Future Yet to Come – March 2, 2024, 7:00 p.m.

Past Deposits from a Future Yet to Come, a new video art installation by internationally recognized artists Teresa Hubbard / Alexander Birchler, opens on March 2, 2024, at Moody Amphitheater in Waterloo Park. This installation features historic artifacts discovered along Waller Creek from the mid-19th to mid-20th centuries. The video art installation explores how these objects connect us to Austin's past, present, and future, offering a glimpse into the daily lives of people who once lived and worked along the creek. The program begins at 7 p.m., with a live performance of a musical score composed by Alex Weston will open this installation.

This installation is scheduled to be on view for five years, and will be shown every night at Moody Amphitheater, except evenings when a ticketed concert or other special event is taking place.

This event is free and open to the public! Blankets and short/low lawn chairs are welcome. Concessions will be available for purchase on-site. [Home - Waterloo Greenway Conservancy](#)

Moody Center



Get ready for some Basketball at the Moody Center.

On March 2, UT Women's Basketball will host BYU, and UT Men's Basketball will host Oklahoma State. Then, on March 9, the UT Men's Basketball team will face Oklahoma. On March 15, the San Antonio Spurs tip off with the Denver Nuggets, and on March 17, they host the Brooklyn Nets. If you would rather hear some country western music, check out Blake Shelton on March 1. No matter what takes you to the Moody, look for after-hour parking at one of the State parking garages. Event parking is usually available along San Jacinto Blvd. in State Garages R, Q, and B or on Trinity Avenue at State Garage G.

Note: Not all garages are available for every event. Check the website before making your trip. Visit: [Parking – Moody Center \(moodycenteratx.com\)](https://www.moodycenteratx.com/parking)

State Surplus Store



State Surplus Store

Are you looking for a DIY project for Spring Break?

Check out the State Surplus retail store at 6506 Bohm Road, open Monday – Friday from 8 a.m. to 4:30 p.m. You will find good deals on state surplus vehicles, furniture, office equipment and supplies, and small electronics there. You will also discover a constantly changing selection of pocket knives, multi-purpose tools, jewelry, sunglasses, watches, luggage, and toys abandoned at airports around Texas. Check out the online auctions for unique and specialty items for larger projects or bulk-buying. [State Surplus Property – Texas Facilities Commission](https://www.texasfacilitiescommission.com/state-surplus-property).

Please share and encourage co-workers and friends to sign up for this newsletter at www.TexasCapitolComplex.org.

Visit the project website at
www.TexasCapitolComplex.org

Copyright © 2024
TFC Capitol Complex Project, All rights reserved.