



STATE OF TEXAS CAPITOL COMPLEX PROJECT PHASE II



Texas Capitol Complex Update

Progress updates on the Capitol Complex Project | **November 2023**

Capitol Complex Project Phase II _ Future Vision

TFC



Concept: Visitors entering the 1500 Congress Office Building with 15th Street on the left.

The Phase II Project's Animated Video Provides a Glimpse into the Future of the Capitol Complex.

If you could see into the future, what would it be? That is the question the architects at HOK have been hard at work to answer on the Capitol Complex Phase II Project and they have just finished an [animated preview](#) to show us! Combining concepts and research from the [Texas Capitol Complex Master Plan 2020 Update](#) with the lessons learned from the Phase I Project, HOK is designing modern indoor and outdoor spaces that pay homage to the surrounding architecture of the Capitol Complex while providing workplace amenities that promote efficiency and productivity.

A multi-phased, historic undertaking like the Capitol Complex Project requires a variety of communication tools to help us understand what is coming and prepare for the future. One of the most effective of these tools is an animation video. As Ben Crawford, senior principal of design at HOK, explains, “The Texas Facilities Commission (TFC) wants to help everyone envision what is not there today. Our job at HOK was to make the animation as realistic as possible so viewers can imagine themselves walking through the buildings.” The finished animation is so realistic that it is easy to believe you are actually watching a film. The animation even uses special effects technology used in the movie industry. Move over, Marvel; make way for the Capitol Complex Project!

The first step in creating the animation was determining what information it would convey. HOK met with the TFC Facilities Design and Communications teams to plan the video. The primary goal was to align the new animation with the Phase I animation and show Phase II within the broader context of the Capitol Complex Project.



The animation flies south over the Texas Capitol Mall toward the State Capitol. The Mall serves as the central axis of the Capitol Complex Project, creating a green avenue that connects the new State Office buildings with the Capitol and surrounding historic buildings.

What's Inside!

The [Capitol Complex Project Phase II Future Vision video](#) starts where the [Phase I](#) video ends. Both videos face south with a view of the Texas State Capitol to keep the focus of the video on the Capitol Complex in its entirety. The basis of both videos is the Texas Capitol Complex Master Plan 2020 Update, which emphasizes the user experience. The Texas Capitol Mall serves as the central axis of the Capitol Complex Project; therefore, keeping the Mall in the video's foreground was essential.



Interior renderings of 1500 Congress (on top) and 1501 Lavaca (on bottom) and illustrate how the buildings will bring the outside in with open, sunlit lobbies and common areas for informal meetings and gatherings.

As the video progresses, the view turns to show how the new buildings interconnect with the Texas Capitol Mall. The facility designs are based on modern Class A office buildings using methodology such as maximizing natural daylight for user comfort. Graphic renderings and animation illustrating the interiors and outdoor courtyard keep the focus on the user experience. Imagine walking through the campus and stopping at a café to get a cup of coffee or a bite to eat before heading to your office or next meeting. At the end of the video, the view expands to show all of Phase II within the larger frame of the Capitol Complex.

Capitol Complex Project Phase II_Future Vision

TFC



At the end of the animation, the video pans out to show an aerial view of the Capitol Complex and the surrounding area. This view places Phase II within the context of the Capitol Complex.

Collaboration and Hundreds of Hours

The animation evolved over hundreds of manhours by a dozen designers and visualization artists. HOK created digital modeling of the building and graphics renderings of the interiors. They partnered with a visualization studio to apply the textures, shadows, landscaping, and lighting that give the animation the realistic “you are here” quality that TFC sought to achieve. This is when the movie magic happened. From plant selection to ensuring the cars were driving in the right direction, the animation team used a precision eye for detail, close collaboration, and an iterative process to verify that every detail was accurate.

“The Capitol Complex tenants and visitors know the buildings surrounding the Phase II site. Therefore, it was important to get it right. Giving viewers a complete experience and providing a view of the surrounding buildings and amenities was as important as showing the Phase II project itself,” said Crawford.

Creating an animation video has benefits beyond communicating the vision to a broad audience. The animation also gives the design team a holistic view of their design. “It is important that whatever we visualize is resolved technically and depicts what we have designed. Through the animation process, we thoroughly study the different perspectives of a project to ensure that the design flows seamlessly. This allows us to walk the project virtually, viewing it through the eyes of the user and testing how our ideas will be experienced,” said Crawford.

The Phase II project will be completed in 2027. Until then, we hope you continuously turn to the [Capitol Complex Project Phase II Future Vision video](#) to discuss the project with your friends, family, and colleagues and imagine yourself using these new facilities. You can view the video on the homepage of the project website, www.TexasCapitolComplex.org.

THE REVIEWS ARE IN!



TFC Deputy Executive Director, John Raff says, “Continuing the dream. Creating a place of choice for the Texas Government Workforce and the citizens of Texas.”

Construction Progress Report



< 1501 Lavaca

The excavation on all three sites is progressing swiftly, with crews working six days a week from 6 a.m. to 6 p.m. The Lavaca site is nearing the bottom of the excavation, and the loading zone is busy with hauling trucks. Shotcrete and rock anchor installation continues downward.

Preparation for the arrival of the cranes for the Lavaca site will begin soon. The cranes are expected to arrive in January 2024, and vertical construction will start then.

Texas Capitol Mall >

Mass excavation and haul-off are ongoing at the 1500 Congress and Texas Capitol Mall sites.



< 1500 Congress

The excavation on all three sites is progressing swiftly, with crews working six days a week from 6 a.m. to 6 p.m. The Lavaca site is nearing the bottom of the excavation, and the loading zone is busy with hauling trucks. Shotcrete and rock anchor installation continues downward.



24-7 Construction Cameras

There are three construction cameras documenting this iconic project. Watch the progress on all these projects via the construction cameras on our project website. www.TexasCapitolComplex.org

[View the Construction Cameras](#)



Team Spotlight - Oscar Orduno, Inc.

Project Role - Earth Retention System

This is the first edition of Team Spotlight, articles that will highlight the contributions of our team members for the completion of the historic Capitol Complex Project Phase II.

Excavation continues on Phase II as the big excavators dig deeper and the earth retention system is installed. Digging sixty-five feet below street level requires precision and expertise to form the perimeter walls that will stabilize the earth, support the new buildings, and protect the surrounding area. Oscar Orduno, Inc., a state leader in earth retention systems, is managing this critical part of the project as a [JE Dunn Construction](#) team member.

From Baking to Construction

Oscar Orduno was born into a family of professional bakers who own a successful baking company with multiple locations in Mexico and US. His father, grandfather, and uncles are bakers, and Oscar began learning the family business from a young age. Even though Oscar's path appeared set, he wanted something different. He would watch the exciting activity and the big machinery on construction sites with awe and knew that one day, he wanted to own a construction company.

He learned the family business well, but when Oscar was seventeen, he moved to the U.S. and began focusing on his dream. After high school, he enrolled in Sam Houston University, graduating in 2005 with a degree in construction management. While earning his degree, Oscar also worked for a general contractor. In 2006, he got a job at an earth retention company, and it was here that Oscar found his professional calling. Earth retention is a specialized construction industry niche, and Oscar reveled in it.

Oscar worked hard, but after five years, he realized he was not making headway toward owning a construction company. However, what he did have was a partner who believed in his dream, his wife Odette Orduno.

A Family Affair

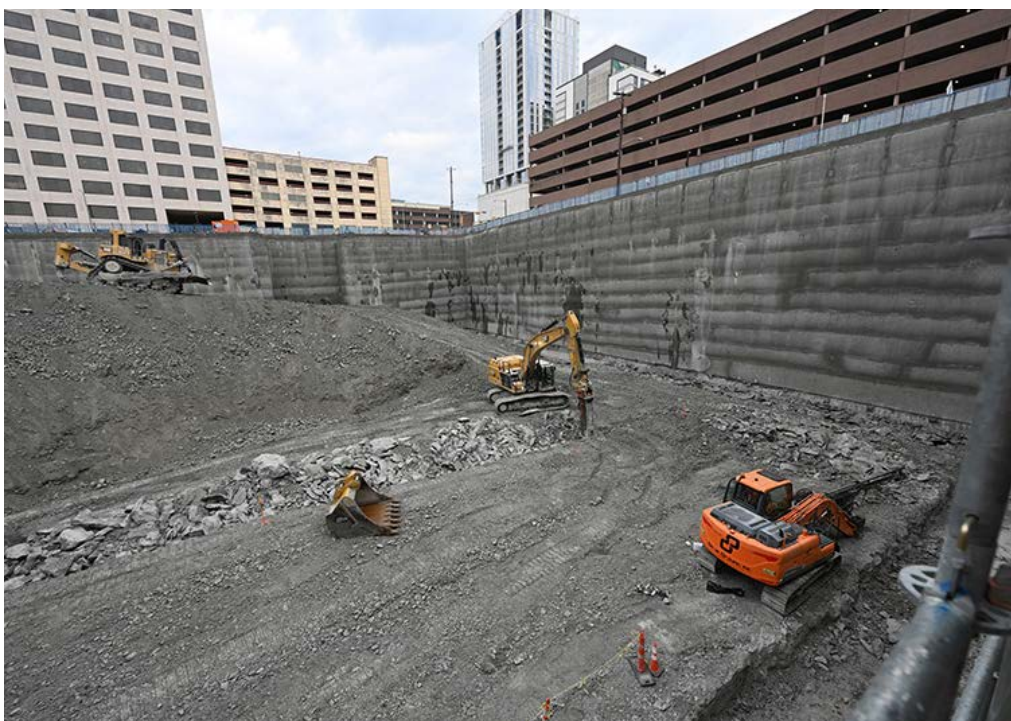
Recognizing that Oscar's salary from his construction job and Odette's salary as a teacher were not going to fund the opening of a construction company, they needed to come up with a new plan. They had enough savings to open the only other business Oscar knew well: a bakery. They opened [El Sol Panaderia y Paseleria](#) in 2011 in Irving, Texas.

Odette resigned from teaching to run the bakery full-time while Oscar continued working at the earth retention company. The bakery has been very successful and has now grown to twenty employees.

Through the success of El Sol Panaderia, by 2014, Oscar and Odette had secured the funding to open Oscar Orduno, Inc., specializing in earth retention systems. Oscar poured all his energy into the business, earning a reputation for quality workmanship and gaining more and more clients. In 2018, Oscar Orduno, Inc. was selected to design and build the permanent earth retention system for the UT Moody Center arena. Being part of this iconic project helped the company grow, bringing opportunities with internationally known companies such as Tesla, SpaceX, and Apple. The company now has more than 250 employees and works across Texas, with major operations in Austin and Dallas. The company has a strong project portfolio of public and private projects, ranging from highways to commercial office buildings. As a state leader in earth retention, Oscar Orduno, Inc. partners with manufacturers and engineering firms throughout the supply chain to provide cutting-edge technology and techniques on its projects.

Building a Complex Earth Retention System Below Ground Level in the Middle of Austin

Oscar Orduno, Inc. is a veteran of the Capitol Complex Project and installed the earth retention system on Phase I. For Phase I, the company built a system that had been pre-designed. However, for Phase II, they are providing

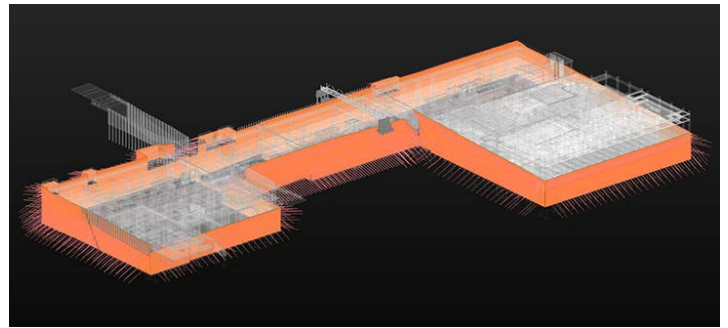


design-build services, using a team of in-house engineering and outside consultant capabilities to optimize the design and provide competitive pricing.

The Phase II design employs [Building Information Modeling \(BIM\)](#), which involves creating and overlaying digital images of plans to see how the different pieces interact. Oscar Orduno sees BIM as an essential tool for designing earth retention systems. "BIM

allows us to identify and mitigate potential obstacles during the design phase, which protects underground infrastructure during construction,” said Orduno.

The Phase II design includes an anchored soldier pile retention system. The earth retention system work began on Phase II in June with the arrival of a pier drill, low-profile drilling rig, excavators, and front-



View of earth retention system in BIM model.

end loaders. The low-profile drilling rig allows work to proceed under the overhead electrical lines on 16th Street.

Excavation proceeds in five-foot increments called lifts. The excavators dig out the area and smooth the perimeter wall face while front-end loaders move the excavated material to trucks. Shafts are drilled around the perimeter of the site. Once a shaft is drilled, a soldier pile is placed inside. Concrete is then poured around the pile to fill the shaft.

The next step of the earth retention system is installing the rock anchors. A small diameter drill bores a hole for the anchors through the soldier piles and into the wall face. An anchor tendon and grout are then placed in the drilled hole. After the grout has cured for five days, a hydraulic jack is used to verify the anchor’s capacity. After testing, the anchor is locked-off to preload, or post-tension, the anchor. Locking the anchors activates the earth retention system and reduces wall movement. The post-tensioning connects every aspect of the earth retention system into one unit, supporting the entire site and protecting the surrounding buildings.

The final step in the process is covering the wall face in shotcrete. A ready-mix concrete truck fills the shotcrete pump, and the entire wall face is covered in shotcrete. The shotcrete must be very smooth on the wall face to ensure that the waterproofing membrane (installed by a different trade partner) is applied appropriately. It is important that this bond is tight to protect the building from water infiltration. Once the shotcrete is applied, the earth retention crew is ready to start the next five-foot lift.



An Oscar Orduno team member operates a drill rig and pier drill while another team member helps monitor the progress.



A front end loader moves material around a staging area.



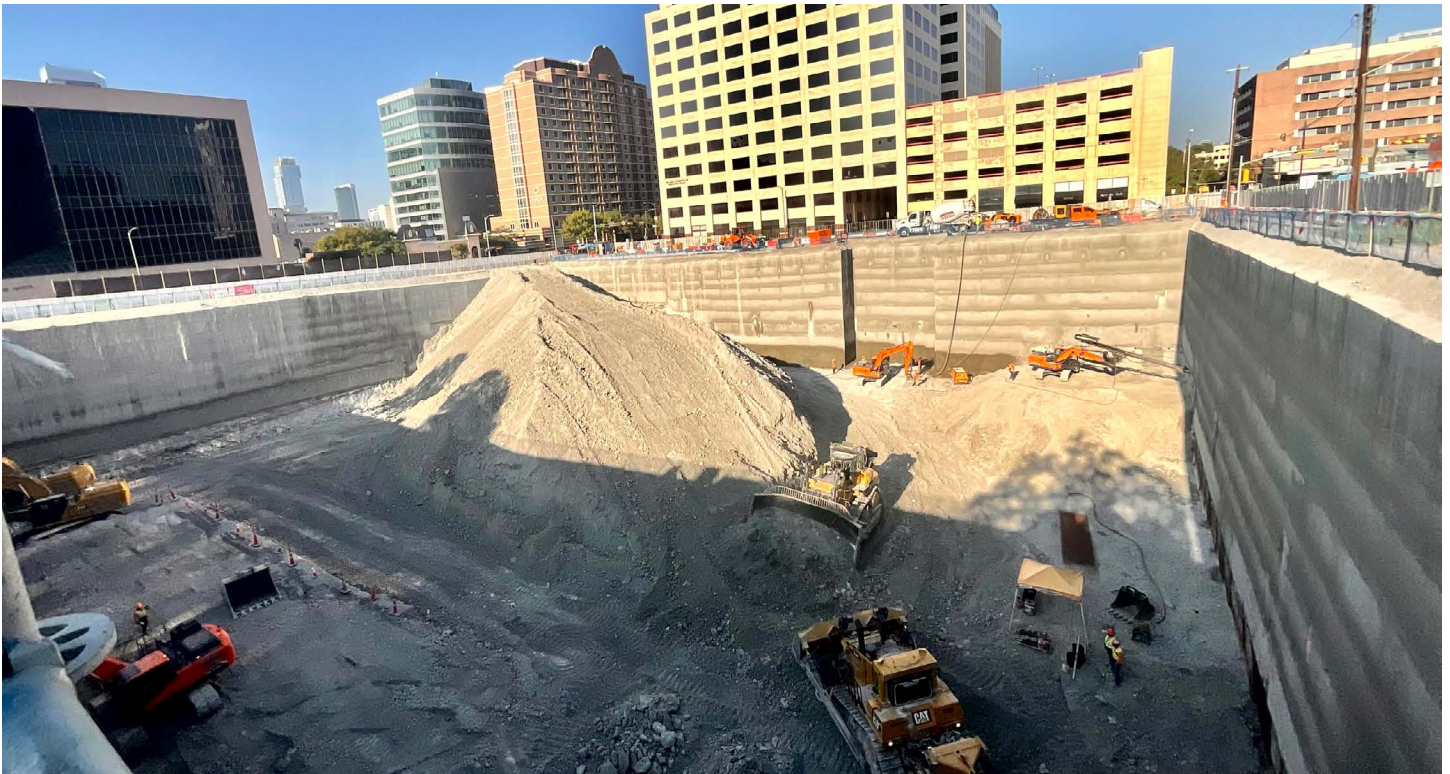
The team installs anchors into the wall face on Phase II. A shotcrete pump at ground level is readied for the next step in the process.

Installing the earth retention system requires skilled precision to maintain the wall alignment. The industry standard is minus two-inch tolerance. Oscar Orduno, Inc. has a zero tolerance on alignment and works diligently to stay dead center. Most projects require a ten-man crew to install the earth retention system. Due to the dense urban setting, multiple sites, and historic structures next to the 1500 Congress site, a thirty-member team of experienced earth retention specialists is installing the Phase II system.

“Earth retention systems are designed to prevent any shifting in the ground during and after construction. Drilling vibration during construction is a real



The team applies shotcrete to the wall face.

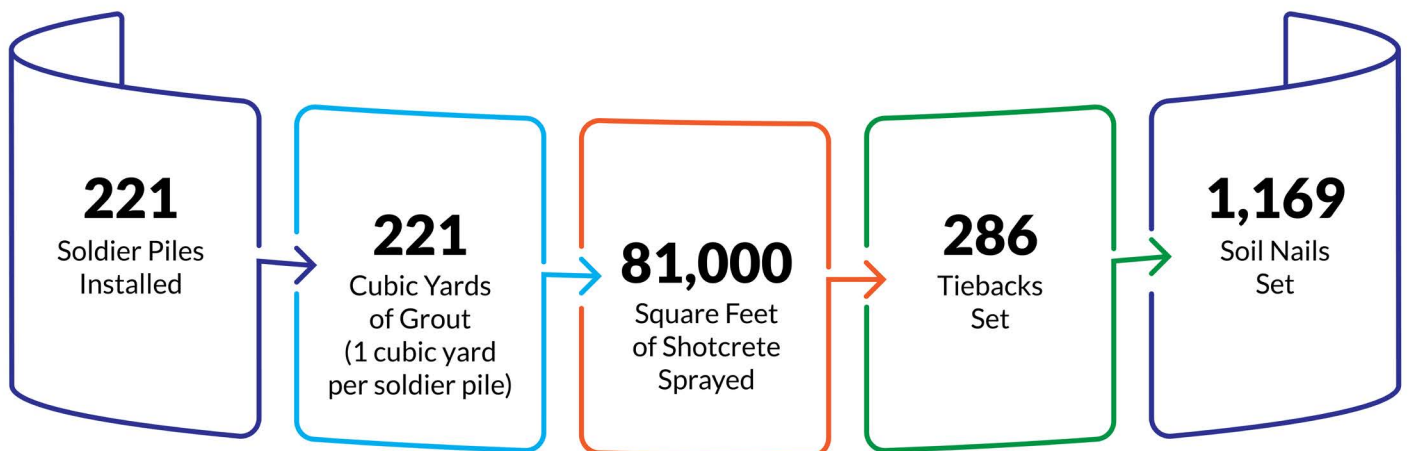


The lifts can be identified by the different colors of dried shotcrete. To see more photos of the excavation, visit the project website at www.texascapitolcomplex.org.

concern. We design our systems based on the new building design and everything that surrounds the site and use different installation methods based on the existing conditions,” Orduno said.

The earth retention system for Phase II uses a passive excavation drilling method that reduces vibration. TFC has employed independent specialists to perform extensive monitoring of the behavior of the retention system as it is being installed and the behavior of the buildings around the construction.

Once excavation reaches the maximum depth, the earth retention system is complete. The earth retention system on the 1501 Lavaca site is nearing completion, and the earth retention system on the 1500 Congress site is estimated for completion in summer 2024.



The Responsibility of Being a Historically Underutilized Business (HUB) and What Comes Next

Oscar Orduno, Inc. has been a HUB since the business opened in 2014. The company has grown quickly and benefited from the opportunities HUB certification makes possible. However, Oscar Orduno is troubled that there is a past stigma that HUB companies may be less qualified. “Past expectations on HUBs were low as if these companies were less qualified. I am proud to be a HUB provider and want to be selected based on our quality service.”

Orduno understands the responsibility inherent in being certified as a HUB and feels it is important to serve as a role model for new HUBs entering the construction industry. “Serving as a role model known for delivering a quality product should be an expectation for the companies hiring us,” Orduno continues.

Oscar Orduno, Inc.’s goals for the future are to continue expanding to provide more service to new and existing clients. The company opened a new headquarters in Dallas in 2022 and is planning an office in Austin. Long-term plans include working in other states.

We thank Oscar Orduno, Inc. for the precision execution of one of the most complex and critical systems of the Capitol Complex Phase II project and salute their commitment to the HUB program.



Pictured from left to right: Oscar Orduno, Karis Torrez, JE Dunn Project Engineer, and Mike Hamline, JE Dunn Superintendent. Note: The photos in this article are courtesy of Oscar Orduno, Inc. and the Texas Facilities Commission. The photos are from both Phase I and Phase II to show the different components of an earth retention system.

Construction Traffic Updates

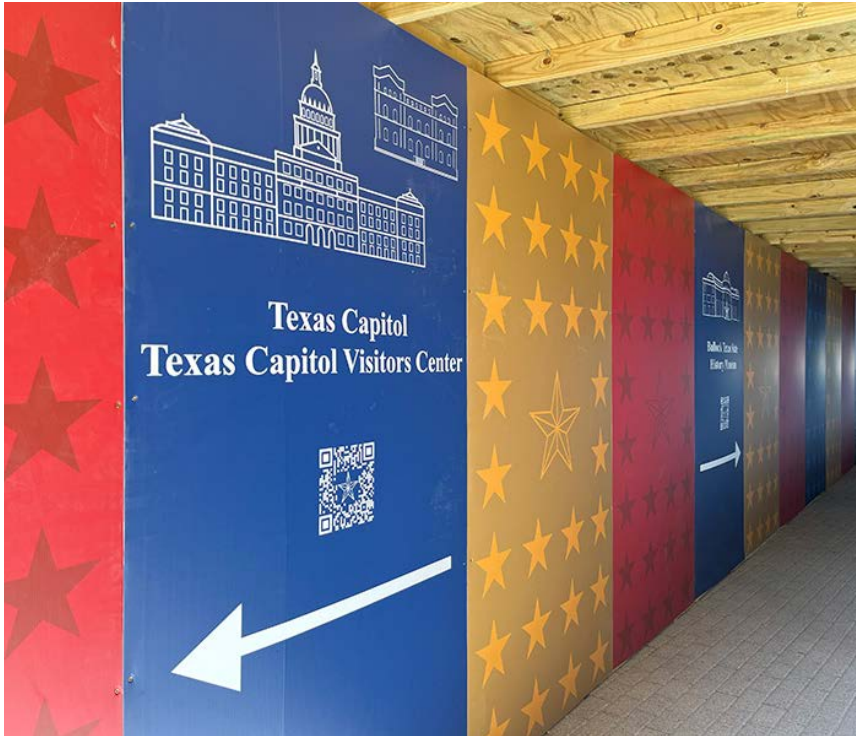
SAFETY ALERT:

Drive defensively and slow down on 15th Street

15th Street & Congress Lane Closures: The west bound lane of 15th Street from Brazos Street to Lavaca Street (adjacent to the construction site) will be closed for the duration of the Capitol Complex construction project. This lane will be used as a construction loading zone for the building projects. Watch out for heavy equipment and construction vehicles entering and exiting the loading zone at Brazos and exiting at Lavaca. **THE SIDEWALK ON THE NORTH SIDE OF 15th STREET IS CLOSED.** Please use the sidewalk in front of the Capitol instead.

Colorado Street is Closed. Colorado Street will be closed between 15th Street and 16th Street for the duration of the project. Please drive carefully in this area.

Follow us on X (formerly known as Twitter) for specific details on street and closures. [@TFCtx](#)



Pedestrian Updates

Walking Routes

Need a map? Use the special sidewalk routes developed for this project.

([Download a map here.](#))

Onsite Maps - Look for the six foot, red, A-frame signs for a current map of the sidewalk routes around the construction. Use your smart phone to scan the QR code on the signs to open a pdf of the Capitol Complex Travel map you can take along with you.

Traveling from the Bullock Museum to the Capitol - [Watch this video.](#)

Closed Sidewalks

All sidewalks adjacent to the construction zone are closed.

- **CLOSED:** Colorado between 15th & 16th Street (All Sidewalks) – Use the sidewalks on the west side of Lavaca Street to travel north or south or use the covered sidewalk next to the Robert E. Johnson Building (REJ) building to travel north or south.
- **CLOSED:** Congress between 15th & 16th street (All Sidewalks) – Use the covered walkway along the REJ Building instead.

- **CLOSED:** 15th Street between Lavaca & Congress (North) – Use the sidewalk on the Capitol side of the street instead.
- **CLOSED:** Lavaca between 15th & 16th Streets (East and South) – Use the sidewalk along the William P. Clements (WPC) building instead.

Closed Crosswalks

- **CLOSED:** Congress & 15th Street
- **CLOSED:** Colorado & 15th Street
- **CLOSED:** Colorado & 16th Street (East, West, and South)
- **CLOSED:** Lavaca & 15th Street (East and North)
- **CLOSED:** Lavaca & 16th Street (East and South)

Where to Cross 15th Street

- **Congress** – Use the Brazos Street crosswalk.
- **Lavaca** – Use the west crosswalk closest to the Double Tree Hotel.



IMPORTANT FOR YOUR SAFETY



Construction zone on 15th Street between Congress Avenue and Lavaca Street. The construction loading zone occupies the northern lane of 15th Street. Watch out for construction vehicles entering and exiting from this lane. [Watch the video.](#)



Watch your step! There is uneven pavement and detours in this area.



PLEASE - Respect the flaggers.



Drive defensively and slow down on 15th Street.

Follow us on X (formerly known as Twitter) for specific details on street and closures. [@TFCTx](#)

Capitol Complex News



CAPITOL COMPLEX PROJECT WINS!

The [Central Texas Chapter of the Associated Builders and Contractors, Inc. \(ABC\)](#) recently held its annual Excellence in Construction Awards and the Safety Excellence Awards. The Texas Facilities Commission is honored that the Capitol Complex Project, Phase I was recognized with multiple awards, and we would like to congratulate the following contractors:

[Flintco, LLC](#)

Award: General Contractor Mega-Projects All Projects Over \$200 Million,
Institutional: Over \$200 Million

Project: Phase I, George H.W. Bush State Office Building (Package 4)

[White Construction](#)

Award: General Contractor Mega-Projects All Projects Over \$100 Million,
Institutional: \$100 to \$200 Million

Project: Phase I, Barbara Jordan Building (Package 5), Texas Capitol Mall and
Parking Garage (Package 6)

[Bergelectric Corp.](#)

Award: Specialty Contractor Electrical All Projects Over \$10 Million

Project: Phase I, Barbara Jordan Building (Package 5)

Flintco and White Construction were also recognized with Safety Training Evaluation Program (STEP) Awards for outstanding performance in safety, proven by statistics and evaluations, as Top Performers for 2023 and Accredited Quality Contractors for 2022 and 2023. White Construction also receive a Chapter Safety Award of Excellence.

These regional winners are now eligible to advance to the National ABC Excellence in Construction Awards.

Congratulations to all the winners!

Neighborhood News

Bullock Texas State History Museum



Sharks

On Display until March 24, 2024

Come face to face with Sharks, the ocean's most magnificent and misunderstood species. Bring your family to the fun and educational experience. Don't forget to Save the Date for HEB Free First Sunday program on December 3, 2023, from 10 a.m. to 5 p.m. Visitors will enjoy FREE exhibition admission all day and can explore the Story of Texas exhibits and artifacts on all three floors of the museum. Plus, visitors can explore the Sharks exhibit. Learn more here: [Sharks | Bullock Texas State History Museum \(thestoryoftexas.com\)](https://www.thestoryoftexas.com/sharks)

Blanton Museum of Art



Make plans to explore the Blanton Museum this holiday season.

Now showing through February 11, 2024

In December, make plans to stop by for their **Weird Winter** experience (Dec. 9 – 30) – This is a whimsical, musical, interactive installation by Steve Parker that will be on view during museum hours and included with admission. And don't forget to check out the Blanton Museum Store for holiday specials. Learn more at: [Home - Blanton Museum of Art](https://www.blantonmuseum.org/)

Texas State Capitol Gift Shop



The 2023 ornament has arrived!

A Texas tradition for over 28 years, the Texas Capitol Ornament Collection has been a favorite collectible. Each year since 1996, the Capitol has issued a new annual design reflecting an aspect of the Capitol's building or history. Over the years, ornaments featuring popular themes such as the Alamo, bluebonnets, wildflowers, and the Texas

House and Senate chambers have been added to the assortment. The ornament is proudly made in the USA. The annual collectibles are finished in 24k gold and presented in velour-lined gift boxes. Stop by or shop online at: [Unique Texas Gifts and Home of the Texas Capitol Ornament \(texascapitolgiftshop.com\)](http://www.texascapitolgiftshop.com)

Waterloo Greenway



Waterloo Park is open and ready for you and your family. Consider stretching your legs on a leisurely walk on a 1.5-mile trail through 11 acres of revitalized green space. Waterloo Park is located at 500 E 12th Street, Austin, TX 78701.

Park Hours: 5:00 a.m. – 10:00 p.m., including Moody Amphitheater. Hours are subject to change on event days. Here is a link to a self-guided tour of the park: <https://waterloogreenway.org/parktour/>

Moody Center



Are you planning a trip to the Moody Center for a special event? Be sure to check out the “**Plan My Trip**” page on the Moody Center website. [Plan My Trip - Moody Center \(moodycenteratx.com\)](https://moodycenteratx.com) Here you can pre-purchase a parking spot at a nearby parking garage. The garages are within walking distance of the Moody, or pedicabs are available.



Pedicab photo courtesy of [atmtx](https://atmtx.com)



For State Employees Only

After-Hours State Employee Parking for Public Events

State employees are permitted one FREE after-hours event parking permit on a first-come, first-served basis. State employees may register for FREE after-hours events and Garage N daytime parking using the new parking contractor webpage link:

State Employee link to LAZ Parking: tfc.lazparking.com

State employees are required to stop and show the parking attendant a State of Texas employee ID or register in advance for FREE parking permit in State Garages and Lots. DPS-issued parking stickers on vehicles are not sufficient for free entry after-hours (including weekends).

State Garage B and/or G may be temporarily leased during Moody Center events. For free parking, proceed to other open parking locations.

State Garage N is available for free State employee parking and paid public parking for daytime and after-hours parking.

Visit the project website at
www.TexasCapitolComplex.org

Copyright © 2023
TFC Capitol Complex Project, All rights reserved.